



RAIYANI

FOUNDRY & ENGINEERING LLP.

PASSION FOR PRECISION



**Manufacturers of Gray
Cast Iron & Ductile Iron
Casting Components.**

**AN ISO 9001:2015 CERTIFIED
COMPANY**

About Us

Established in the year 1976 as Raiyani Casting, we are manufacturers of high quality precision Gray cast iron and Ductile Iron Castings.

Over 50 years of rich experience in the industry and modern infrastructure makes us capable to produce any critical and complex castings with minimal defects and highest quality standards.



Vision

We at Raiyani foundry & Engineering LLP in believe that excellence product is achieved through keen insight.

To work as a complete system oriented unit to achieve the quality standards by delivering quality products, delivery reliability and process stability.

Facts And Figures

Total Developed Area	: 19980 sq feet
Production Capacity	: 2000 MT per annum
Establishment	: 2022
Working Shifts	: 3



Milestones



1976

- Establishment of our parent company Raiyani casting at Rajkot with a small setup to cater machine tool industry.



2005

- Expansion of unit with a production capacity of 200 Tons per annum



2022

- Foundation of Raiyani Foundry and Engineering LLP at, Rajkot, Gujrat, India.

Advancement in Plant with modern infrastructure and a production capacity of 2000 MT per annum.



2024

- Accredited with ISO 9001:2015 certification from TUV SUD GmbH, Germany.

Advancement and Recruitment in the Quality control and Production Department.

Infrastructure

Molding :-

- Green sand Molding : Pneumatic jolt and pneumatic rammend molding.
- Core Shop : Fully automized PLC controlled cold & hot box core shooters.
- Good Casting weight : 0.5kg to 150kg.
- Shell Molding : Molding through fully automized PLC controlled shell core shooters.
- Good Casting weight : 0.1 kg. to 25 kg.



Melting :-

- Plasma Induction make medium frequency (250 kw) Panel with 300 and 150 kg crucibles.



Quality Control

Sand Testing:- Kelson Make fully digital green sand testing lab.



Chemical Composition Testing



- German Hiltachi make spectrometer with 30 channels.

Spectro Display



- Auto Alloy Addition Spectro Display.

Hardness Testing



- Kelson make computerised Brinell hardness tester.
Load kgf - 250 - 3000 Table size - 350mm X 600mm

Tensile Testing



- Kelson Make Computerize Universal Tensile Machine (UTM).

Computerized microscope



- Computerized microscope for the microstructural analysis.

General Operation & Inventory control



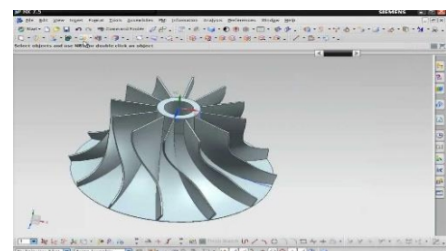
-ERP system for Material Movement and inventory.

Temperature



- Infrared pyrometer for temperature handling

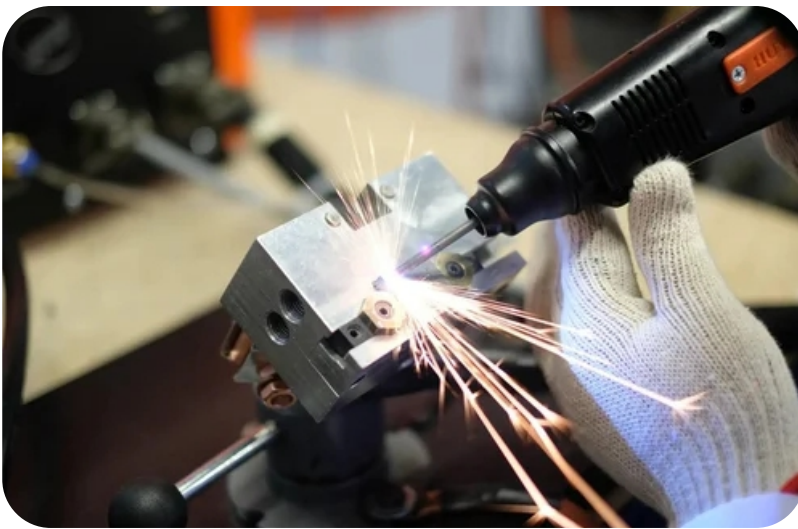
Development



- Tooling & Die Development

Other Facilities

Precision Machining



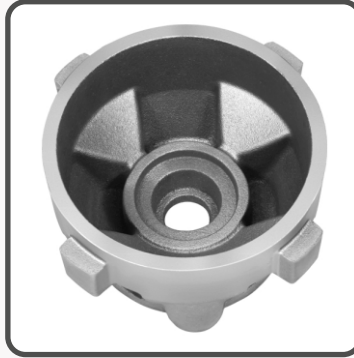
Surface Treatment

Heat Treatment

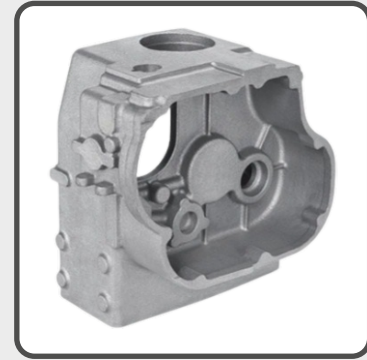


Applications

General Engineering

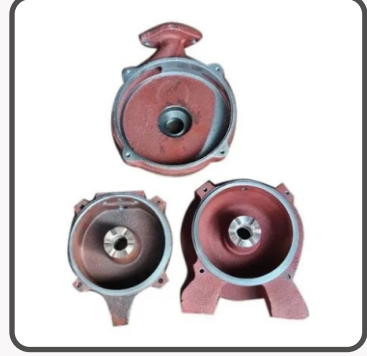
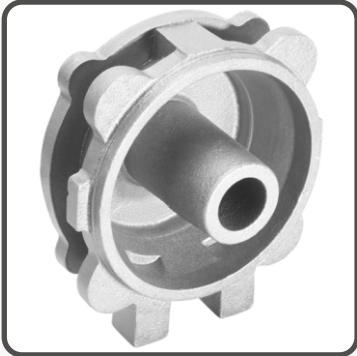
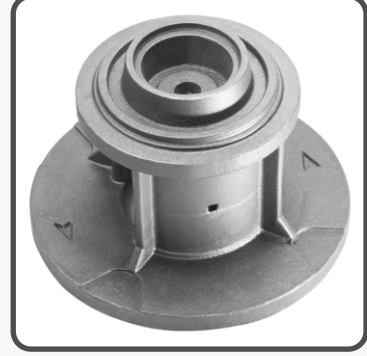
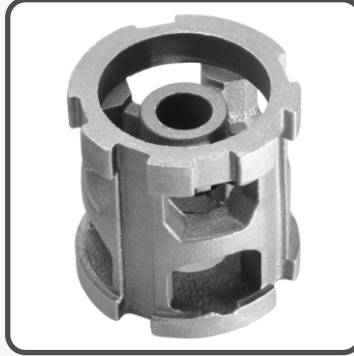


Automotive

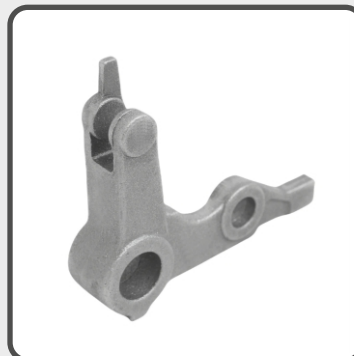


Applications

Pumps Valves and Fluid Industries



Textile



Applications

Tractor & Implements

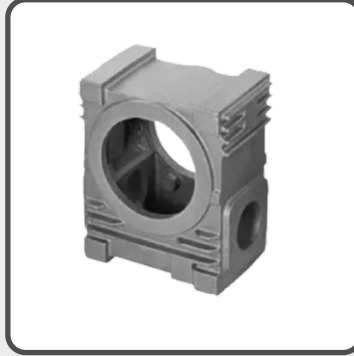


Motor and Power Generation



Applications

Gear box & Transmission



Agriculture



Gray Cast Iron Grade List

Country	Standard	Equivalent Grades of Gray Iron (Grey Cast Iron)						
ISO	ISO 185	100	150	200	250	300	350	-
China	GB 9439	Ht100	HT150	HT200	HT250	HT300	HT350	-
USA	ASTM A48	-	NO.20 NO.25	NO.30	NO.35	NO.40 NO.45	NO.50	NO.55 NO.60
Germany Austria	DIN 1691	Gg10	GG15	GG20	GG25	GG30	GG35	GG40
European	EN 1561	EN-GJL-100	EN-GJL-150	EN-GJL-200	EN-GJL-250	EN-GJL-300	EN-GJL-350	
Japan	JIS G5501	Fc100	FC150	FC200	FC250	FC300	FC350	-
Italy	UNI 5007	G10	G15	G20	G25	G30	G35	-
France	NF A32-101	-	FGL150	FGL200	FGL250	FGL300	FGL350	FGL400
UK	BS 1452	100	150	200	250	300	350	-
India	IS 210	-	Fg150	FG200	FG250	FG300	FG350	FG400
Spain	UNF	-	Fg15	FG20	FG25	FG30	FG35	-
Belgium	NBN 830-01	FGG10	FGG15	FGG20	FGG25	FGG30	FGG35	FGG40
Australia	AS 1830	-	T150	T220	T260	T300	T350	T400
Sweden	SS 14 01	0110	0115	0120	0125	0130	0135	0140
Norway	Ns11 100	SJG100	SJG150	SJG200	SJG250	SJG300	SJG350	SJG400

Ductile Iron Grade List

Country	Standard	Equivalent Grades of Gray Iron (Grey Cast Iron)						
ISO	ISO 1083	400-15 400-18	450-10	500-7	600-3	700-2	800-2	900-2
China	GB 1348	QT400-18	QT450-10	QT500-7	QT600-3	QT700-2	QT800-2	QT900-2
USA	ASTM A536	60-40-18	60-42-10 65-45-12	70-50-05	80-55-06 80-60-03	100-70-03	120-90-02	-
Germany Austria	DIN 1693	GGG40	-	GGG50	GGG60	GGG70	GGG80	-
European	EN 1563	EN-GJS-400-15 EN-GJS-400-18	EN-GJS-450-10	EN-GJS-500-7	EN-GJL-600-3	EN-GJL-700-2	EN-GJL-800-2	EN-GJL-900-2
Japan	JIS G5502	FCD400	FCD450	FCD500	FCD600	FCD700	FCD800	-
Italy	UNI 4544	GS370-17	GS400-12	GS500-7	GS600-2	GS700-2	GS800-2	-
France	NF A32-201	FGS370-17	FGS400-12	FGS500-7	FGS600-2	FGS700-2	FGS800-2	-
UK	BS 2789	400/17	420/12	500/7	600/7	700/2	800/2	900/2
India	IS 1865	SG370/17	SG400/12	SG500/7	SG600/3	SG700/2	SG800/2	-
Spain	UNF	FGE38-17	FGE42-12	FGE50-7	FGE60-2	FGE70-2	FGE80-2	-
Belgium	NBN 830-02	FNG38-17	FNG42-12	FNG50-7	FNG60-2	FNG70-2	FNG80-2	-
Australia	AS 1831	300-17 400-12	-	500-7	600-3	700-2	800-2	-
Sweden	SS 14 07	0717-02	-	0727-02	0732-03	0737-01	0864-03	-
Norway	Ns11 301	SJK-400.3 SJK-400	-	SJK-500	SJK-600	SJK-700	SJK-800	-



RAIYANI

FOUNDRY & ENGINEERING LLP.

- ☎ +91 98886 94443
- ✉ info@raiyanifoundry.com
- 🌐 www.raiyanifoundry.com
- 📍 Survey no. 93/1, Sitaram Industrial,
Behind Meera Casting, Lothda,
Rajkot - 360024